

Scalable Atlas

Automatic camera-based projector mapping software

- Automatic camera-based mapping
- Designed for complex shapes
- Fast, efficient & replicable
- One-click recalibration



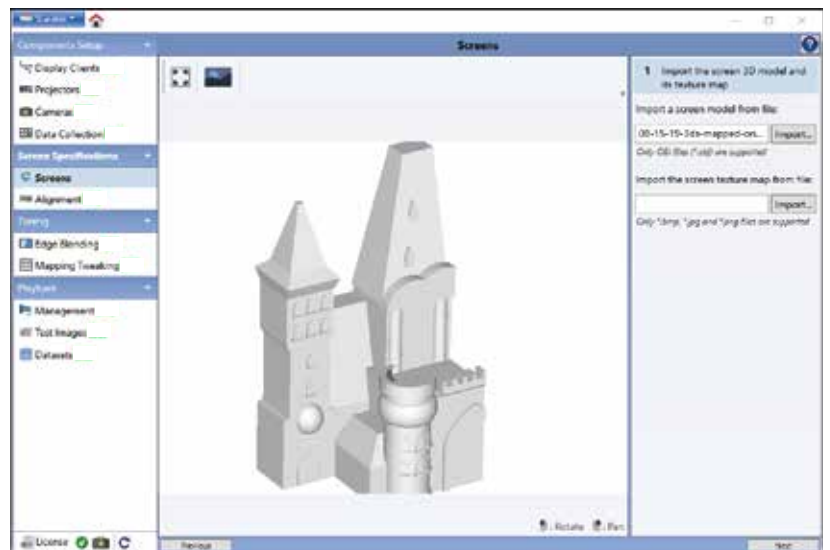
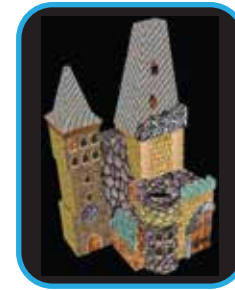
Atlas is a professional software application designed to automatically align the images of multiple projectors together on any complex object or surface. Atlas simplifies the most difficult of projection mapping scenarios by leveraging Scalable's industry-leading camera-based calibration process to eliminate the time consuming manual alignment procedures required by many other tools.

From life-size statues to room-sized experiential environments to highly detailed theme park castles and live events, Atlas is designed to achieve high-quality, repeatable results that can be accessed on demand with a "one-click" recalibration procedure to guarantee your display is always pixel perfect.

Atlas is integrated with MPCDI as well as Scalable's SDK allowing customers to easily plug-in to any Media Server or playback system for a seamless addition to their workflow. Bring your vision to life by adding Atlas specialty mapping software to your existing toolset.

Features:

- Automatic, camera-based projection mapping and blending
- Any object, any shape, any number of projectors
- Scheduled and one-click recalibration
- Easy-to-use GUI for quick and intuitive setup
- Interactive real-time visual preview of alignment
- MPCDI integration (shader lamps profile only)



Use Cases:

- Theme Parks
- Museums & Attractions
- Art Installations
- Advanced Digital Signage
- Customer Engagement Centers
- Events Staging