

ScalableDesktop™ Automatic camera-based warp & blend software

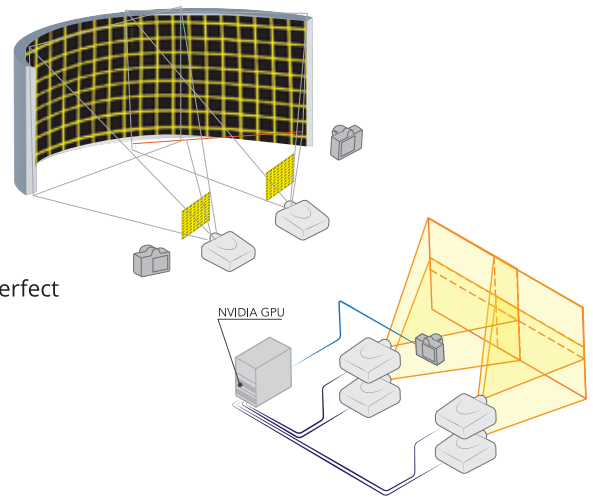
- Single PC systems
- Runs any Windows® application at scale
- Rapid setup & high accuracy
- One-click recalibration



ScalableDesktop is a software application that uses a camera to automatically calibrated multiple projectors from a single PC. ScalableDesktop is designed to be intuitive and easy to use, providing simple setup to create an amazing display. Scale the Windows OS up to 16 projectors, run any Windows applications, using any projectors, without compatibility concerns. ScalableDesktop supports a variety of screen geometries and post-processing tools to ensure the best looking image possible.

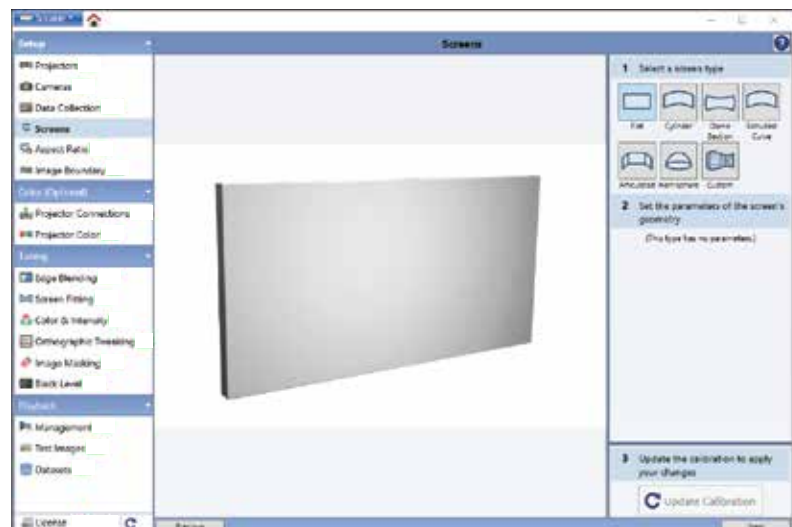
Features:

- Automatic edge-blending - Camera-based calibrations for pixel-perfect blends.
- No-touch recalibration - Enhanced automation built-in so the display is always pixel-perfect
- Projector agnostic - Compatible with all makes and models of projectors.
- Screen geometries - Support for both flat and advanced screen geometries.
- Color + Brightness matching - For best visual quality.



Key specifications & capabilities of Scalable Display Calibration:

- Geometric accuracy - 2.82 arc minutes (0.047 degrees)
- Color matching - Δx 0.01, Δy 0.015 - using existing calibration cameras
- Brightness uniformity - within 10% of desired variation in fL
- Geometry recalibration within 2 minutes per projector



Use Cases:

- Corporate AV
- BIM & CAD
- Data Visualization
- Collaboration
- Digital Signage
- Gaming