

# Scalable Display Manager Automatic, camera-based calibration software

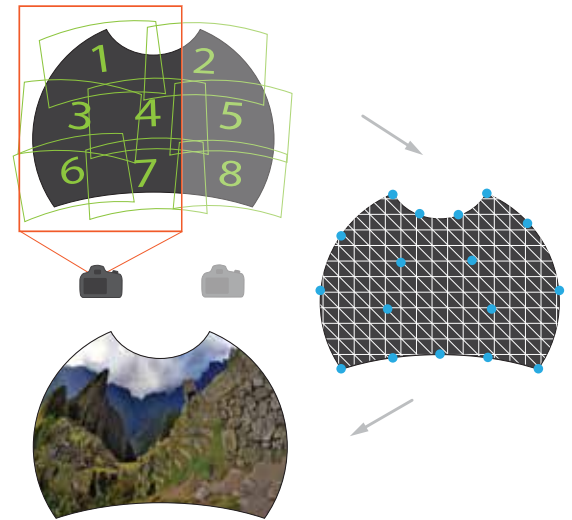
- Automatic, camera-based calibration
- Simulation grade accuracy
- Plug & play architecture
- One-click recalibration



Scalable Display Manager (SDM) is a software application that automatically calibrates multiple projector arrays, supporting domes, cylinders, or any advanced geometry screen. Powered by patented camera-feedback technology, SDM calculates extremely precise calibrations and stores the results as a Scalable Mesh File (SMF). The SMF is directly integrated with many leading image generators, warping boxes and media playback devices. The automatic recalibration guarantees that your display is ready with a touch of a button, eliminating costly downtime and reducing system maintenance.

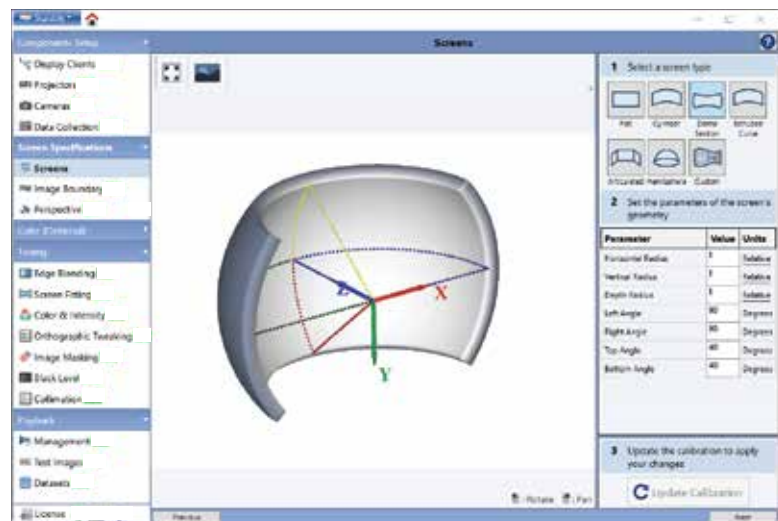
### Features:

- Unlimited resolution & unlimited number of projectors.
- Multiple screen geometries - flat, cylinder, domes and custom .OBJ files.
- Distributed rendering applications.
- Frustum calculation for 3D engines.
- Supports multiple eyepoints and dynamic eyepoint.
- Scheduled calibrations run daily/weekly without user intervention.
- Color & brightness matching for best visual quality.



### Key specifications & capabilities of Scalable Display Calibration:

- Geometric accuracy - 2.82 arc minutes (0.047 degrees)
- Color matching -  $\Delta x$  0.01,  $\Delta y$  0.015 - using existing calibration cameras
- Brightness uniformity - within 10% of desired variation in fL
- Geometry recalibration within 2 minutes per projector



### Use Cases:

- Simulation & training
- Immersive visualization environments
- Museums & attractions
- Planetariums & dome theaters
- AR/VR
- Virtual Broadcast