

SPA-Scalable Panel Assembly

Display calibration software

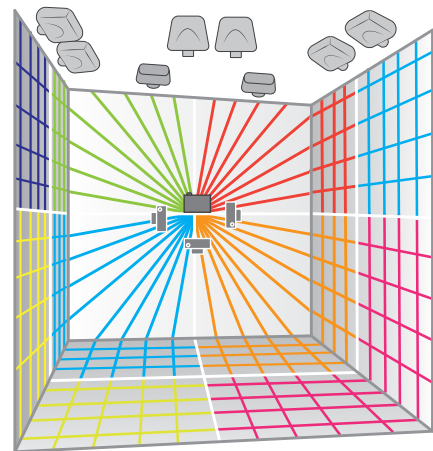
- Transform any space with multi-panel alignment
- Simple setup of flat screens
- Automatic + manual correction
- Supports unlimited panels



Scalable Panel Assembly is Scalable's software application designed specifically for panel-based displays such as articulated screens, faceted simulators and CAVE environments. SPA builds upon most of the features and interoperability of Scalable Display Manager and adds the flexibility to easily mix edge-buttet and edge-blended displays into a single system. SPA supports both manual and automatic camera-based alignment to achieve a seamless calibration.

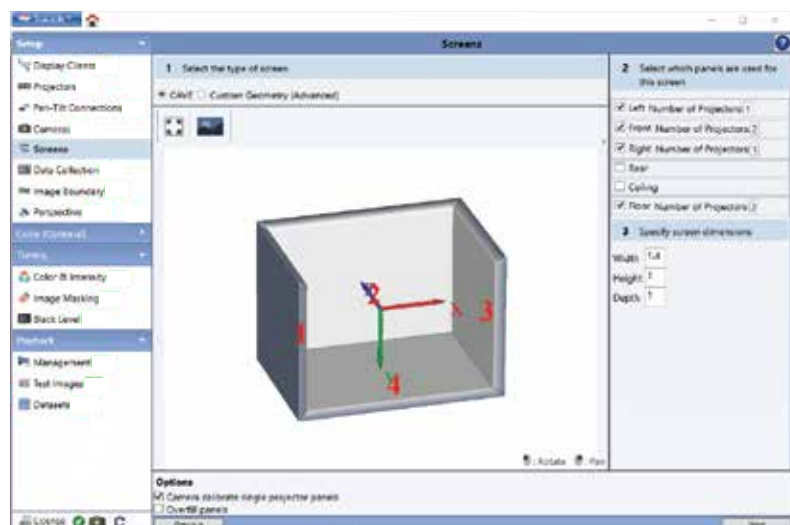
Features:

- Supports any polygonal flat screen.
- Mix edge-buttet and edge-blended projectors.
- Projector agnostic: compatible with all makes and models of projectors.
- Supports single-projector and multiple-projector facets.
- Reduced maintenance costs and time.



Key specifications & capabilities of Scalable Display Calibration:

- Geometric accuracy - 2.82 arc minutes (0.047 degrees)
- Color matching - Δx 0.01, Δy 0.015 - using existing calibration cameras
- Brightness uniformity - within 10% of desired variation in fL
- Geometry recalibration within 2 minutes per projector



Use Cases:

- Virtual and Augmented Reality
- Immersive visualization environments
- Experiential Marketing
- Interactive and touch displays.